

# ARGONAUT VANDAL RESISTANT



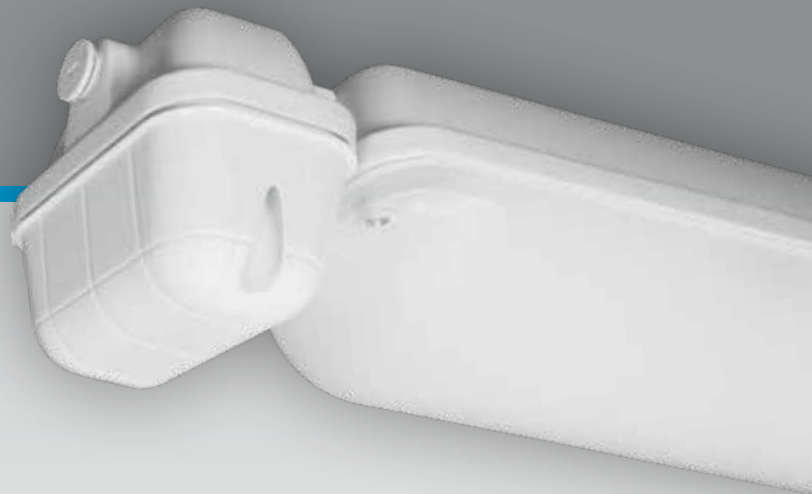
## High Level Impact Protection

The Argonaut Vandal Resistant batten range provides a wide selection of emergency batters for vandal resistant applications where higher level of impact protection is required.

Available in L10 Nanophosphate® with all emergency test options including Zoneworks® XT HIVE, DALI and CTP System.

### Applications

- |  |                  |   |                       |
|--|------------------|---|-----------------------|
|  | Public Amenities |  | Schools               |
|  | Stadiums         |  | Railway Stations      |
|  | Car Parks        |  | Correction Facilities |



### Features and Benefits

- AS/NZS 2293.3 compliant
- LED lamps
- Lithium Nanophosphate® battery
- IK10
- IP66
- Die cast low copper aluminium body
- Zoneworks® XT HIVE or DALI test options
- Clevertest Plus System compatible



# ARGONAUT VANDAL RESISTANT 600MM

ORDERING INFORMATION		L10	240V
Nominal Size		600mm	600mm
TEST OPTIONS / PART #	Standard	LVP2LEDM-P	FVP2LED-P
	DALI Driver	LVP2LEDM-P-DD	FVP2LED-P-DD
	CTP System Compatible	Yes	-
	Motion Sensors	Yes (On/Off)	
	DALI	LVP2LEDM-P-DALI	-
	Zoneworks® XT HIVE	LVP2LEDM-P-HV	-
Carton Quantity		4	
Weight - Single (Carton)		3.2kg	2.4kg
Dimensions (L x W x H)		790mm x 140mm x 120mm	700mm x 140mm x 120mm

For Motion sensor version add -MS to the product code as per the following example: LVP2LEDM-P-MS

TECHNICAL SPECIFICATIONS	L10	240V
Construction - Base	Pressure Die-Cast, Low Copper Aluminium Alloy Body with Powder Coat Paint Finish	
Construction - Diffuser	Opal Impact Resistant Polycarbonate with Secure Access Screws (LSZH)	
Voltage (V) (Frequency (Hz))	220-240V (50Hz)	
Power Consumption ♦ (Standby / Max)	1.1W / 27W	22W
Nominal Total Light Output ♦	2500lm	
Lamp	LED Strip Module	
Lamp CCT & Life ♦	4000K, 100,000 hrs (L80,B20, Ra>80, Ta40c)	
Operating Temperature	0°C to 40°C	
Ingress Protection Rating (IP)	IP66	
IK Rating	IK10	

♦ Please refer to the specific product data sheet for actual power, light output, lamp lifetime and driver values.

EMERGENCY SPECIFICATIONS	L10	240V
Operating Mode	Maintained	-
Battery Configuration	Pod	-
Battery Type	Lithium Nanophosphate®	-
Voltage / Capacity (mAh)	6.6V / 2500mAh	-
Charging Method	Intelligent Current Limited Constant Voltage	-

CLASSIFICATION	L10	240V
C0	D63	-
C90	D32	-

# ARGONAUT VANDAL RESISTANT 1200MM

ORDERING INFORMATION		L10	240V
Nominal Size		1200mm	1200mm
TEST OPTIONS / PART #	Standard	LVP4LED-M-P	FVP4LED-P
	DALI Driver	LVP4LED-M-P-DD	FVP4LED-P-DD
	CTP System Compatible	Yes	-
	Motion Sensors	Yes (High/Low)	
	DALI	LVP4LED-M-P-DALI	-
	Zoneworks® XT HIVE	LVP4LED-M-P-HV	-
Carton Quantity		4	
Weight - Single (Carton)		5.2kg	4.1kg
Dimensions (L x W x H)		1400mm x 140mm x 120mm	1320mm x 140mm x 120mm

For Motion sensor version add -MS-HL to the product code as per the following example: LP4LED-M-P-MS-HL

TECHNICAL SPECIFICATIONS	L10	240V
Construction - Base	Pressure Die-Cast, Low Copper Aluminium Alloy Body with Powder Coat Paint Finish	
Construction - Diffuser	Opal Impact Resistant Polycarbonate with Secure Access Screws (LSZH)	
Voltage (V) (Frequency (Hz))	220-240V (50Hz)	
Power Consumption ♦ (Standby / Max)	0.4W / 44W	43W
Nominal Total Light Output ♦	5135lm	
Lamp	LED Strip Module	
Lamp CCT & Life ♦	4000K, 100,000 hrs (L80,B20, Ra>80, Ta40c)	
Operating Temperature	0°C to 40°C	
Ingress Protection Rating (IP)	IP66	
IK Rating	IK10	

♦ Please refer to the specific product data sheet for actual power, light output, lamp lifetime and driver values.

EMERGENCY SPECIFICATIONS	L10	240V
Operating Mode	Maintained	-
Battery Configuration	Pod	-
Battery Type	Lithium Nanophosphate®	-
Voltage / Capacity (mAh)	6.6V / 2500mAh	-
Charging Method	Intelligent Current Limited Constant Voltage	-

CLASSIFICATION	L10	240V
C0	D100	-
C90	D50	-

# ARGONAUT VANDAL RESISTANT

## SPACING TABLE AND MOUNTING HEIGHTS – AS/NZS 2293.1:2018 (MINIMUM LIGHT LEVEL OF 0.2 LUX)

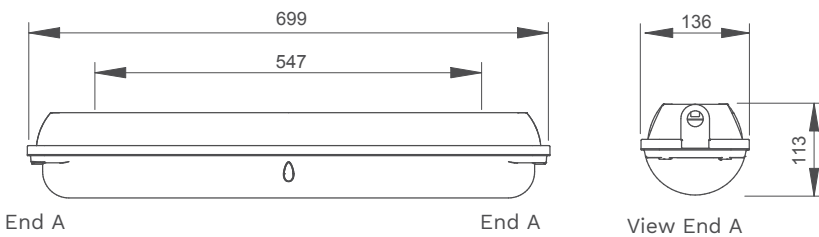
Classification	2.1m	2.4m	2.7m	3.0m	3.3m	3.6m	4.0m	4.5m	5.0m	6.0m	7.0m	8.0m
D32	11.5	13.2	14.8	16.5	17.6	18.0	18.5	19.0	19.5	20.1	20.5	20.7
D50	11.5	13.2	14.8	16.5	18.1	19.8	21.8	22.5	23.1	24.9	24.9	25.4
D63	11.5	13.2	14.8	16.5	18.1	19.8	22.0	24.5	25.2	26.4	27.3	28
D100	11.5	13.2	14.8	16.5	18.1	19.8	22.0	24.7	27.5	31.3	32.6	33.7

■ Care should be taken when spacing luminaires at the distances indicated by the shaded regions to ensure conformance to AS/NZS2293.1, Clause 4.3 is maintained. A single emergency luminaire shall not serve an area of greater than 500 m<sup>2</sup>.

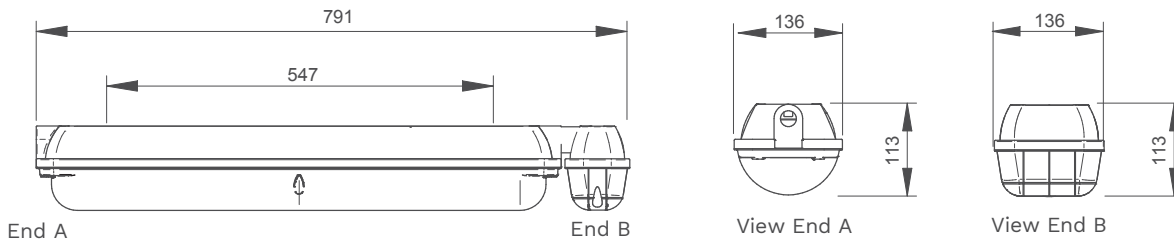
For 1 lux and AS/NZS 2293.1:2005 spacing tables please visit: <https://clevertronics.com.au/spacing-tables/>

\*Warranty information located at: <https://clevertronics.com.au/warranty-statement/>

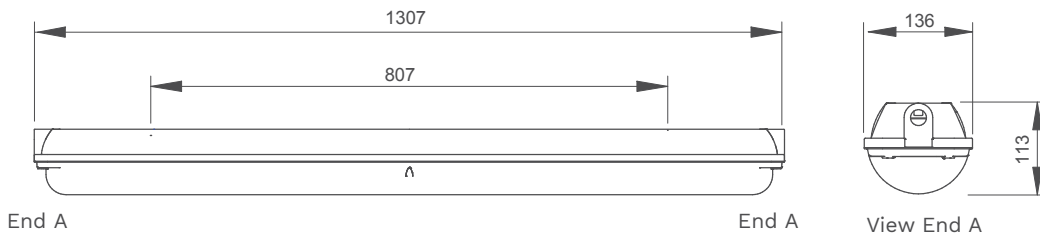
### 600mm/2ft no pod



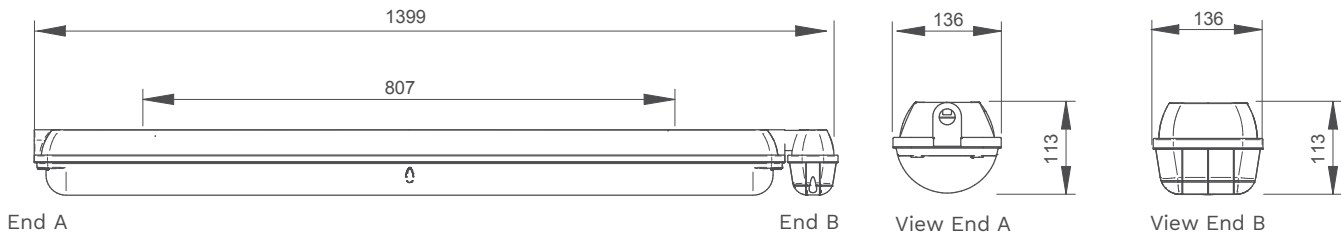
### 600mm/2ft with battery pod



### 1200mm/4ft no pod



### 1200mm/4ft with battery pod



Dimensions (mm)

**clevertronics.co.nz**  
**clevertronics.com.au**

1 Caribbean Drive, Scoresby VIC 3179  
P +61 3 9559 2700 F +61 3 9559 2799 E info@clevertronics.com.au

Clevertronics is committed to continuously improving its products.  
All features and specifications are subject to change without prior notice.  
\_PRODUCT SHEETS – ANZ Argonaut Vandal Resistant 04OCT22

